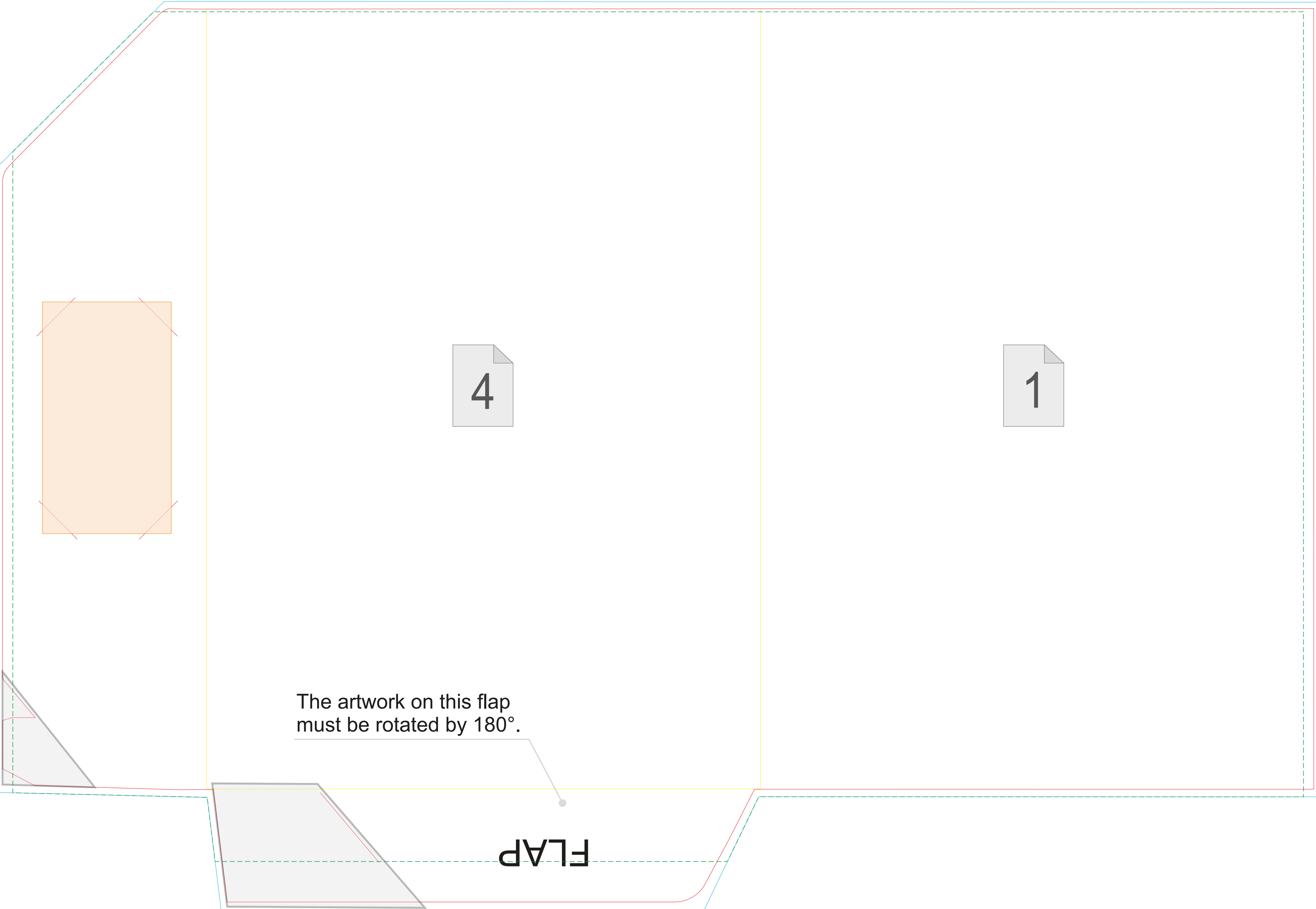
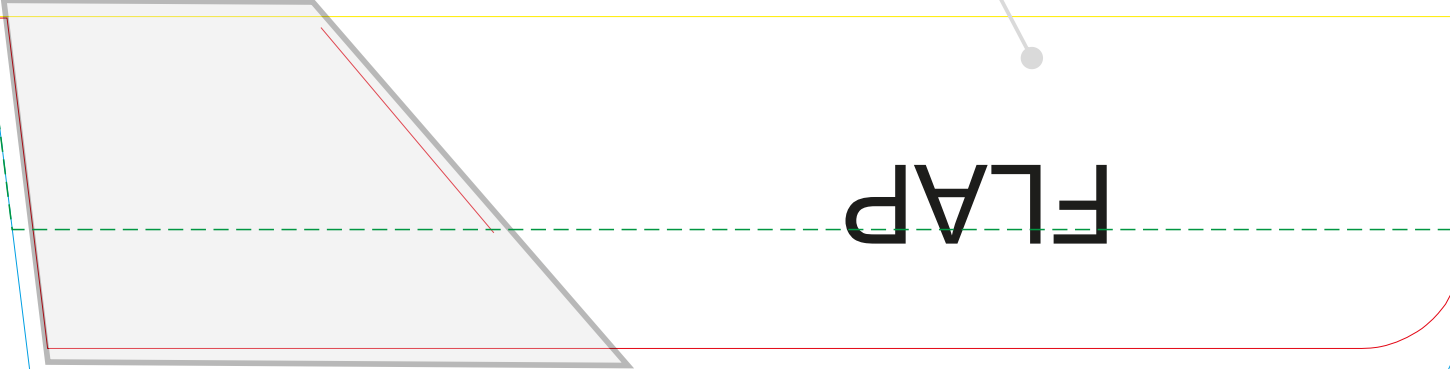
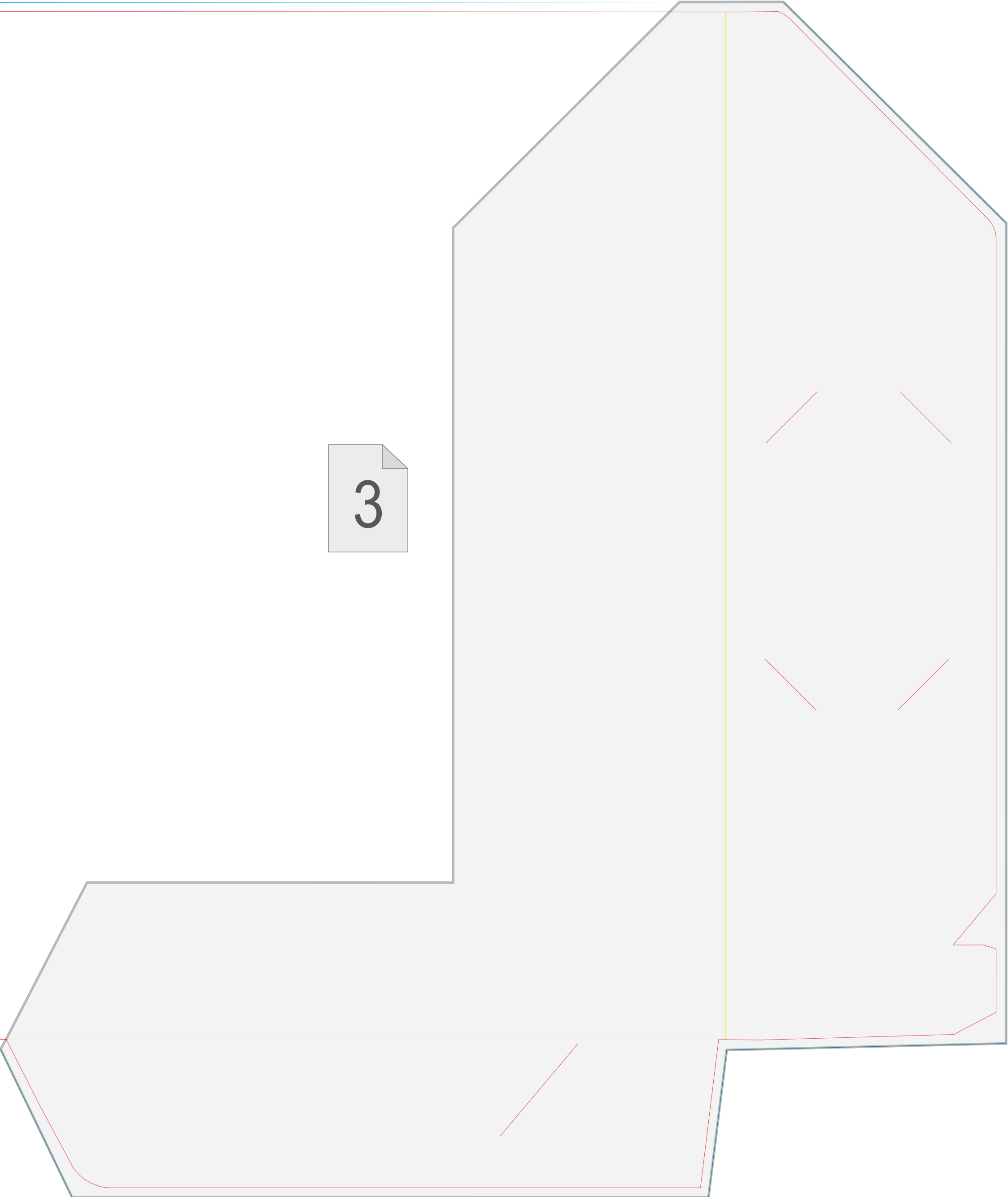


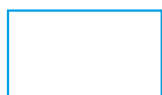
The artwork on this flap
must be rotated by 180°.

FLAP





EXPLANATIONS



Artwork area with bleed

Usually a closed curve that can be used as a cropping area.
Do not place graphics beyond this mark without a sufficient reason.



Trim area. Trim mark. Die-cutting mark.

This mark represents the final finished piece with all its windows, cropped segments and incisions.
For jobs where trim mark artwork is required, it should be added to the artwork.



Safe graphical elements design area

This area allows for safe placement of important elements without the risk of trimming or being too close to the finished piece border/score



Fold/score marks

In your artwork, do not create colour borders or distinct tonal gradations on score marks.
Move important elements 3–5 mm away from score marks.
For jobs where trim mark artwork is required, it should be added to the artwork.



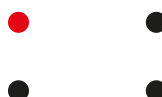
Trim Marks

Do not remove from the artwork!



Manual print registration corners

Do not remove from the artwork! For jobs where trim mark artwork is required, they should be added to the graphics artwork and to trim/crop marks.



Automatic print registration markers

Do not remove from the artwork! For jobs where trim mark artwork is required, they should be added to the graphics artwork and to trim/crop marks.



Page order mark in multi-page templates

Additional Information:

- Do not change the page size or the position of the template on the page.
- All black elements (register and other marks, text) should be kept in the artwork in the same position.
- Remember though to remove all other template elements from the graphics artwork, so that they are not printed.

ADDITIONAL EXPLANATORY NOTES



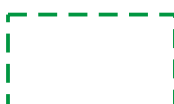
Area hidden under a flap/pocket

Graphics designed in this area will not be hidden under other template elements.



Area hidden under a business card

Graphics designed in this area may be hidden under a business card.
If this folder will not be used with a business card, you can design graphics in this area.



Spot varnish / LiquidMetal area

Spot varnish, 3D spot varnish and LiquidMetal may be designed within this area only.